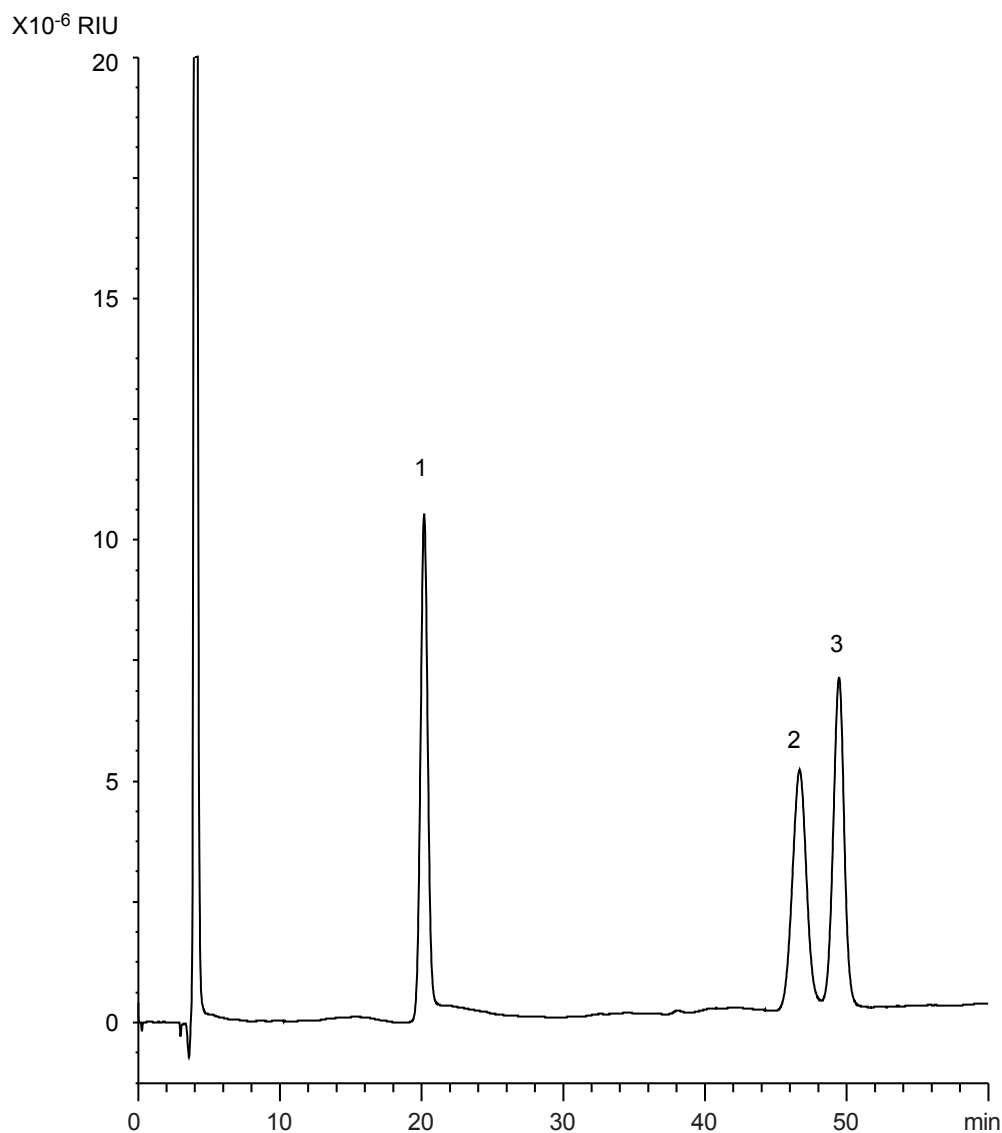


トレハロース
Trehalose

P061002A



1. Glucose
2. Maltose
3. Trehalose

Column : YMC-Pack Polyamine II
250 X 4.6 mmI.D.

Eluent : acetonitrile / water (80/20)

Flow rate : 1.0 mL/min

Temperature : 30°C

Detection : RI

Injection : 5 μ L (10~60 mg/mL)