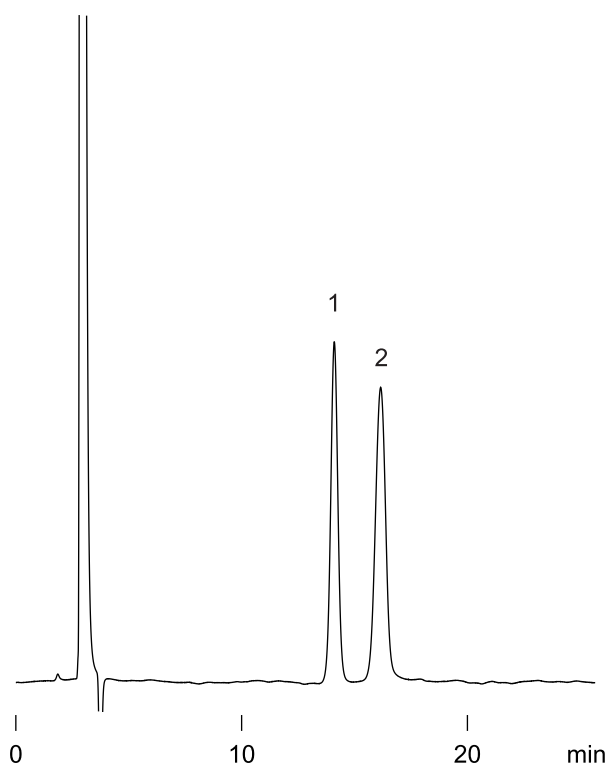


パラチノースとパラチニット
Palatinose and Palatinit

F030616B

1. Palatinose
2. Palatinit (*)
(Isomalt)



(*) Mixture of 6-*O*- α -D-Glucopyranosyl-D-sorbitol
and 1-*O*- α -D-Glucopyranosyl-D-mannitol

Column : YMC-Pack Polyamine II
250 × 4.6 mm I.D.
Eluent : acetonitrile/water (70/30)
Flow rate : 1.0 mL/min
Temperature : 25 °C
Detection : RI, 64 × 10⁻⁶ RIU/FS
Injection : 15 μ L (5.0 mg/mL)