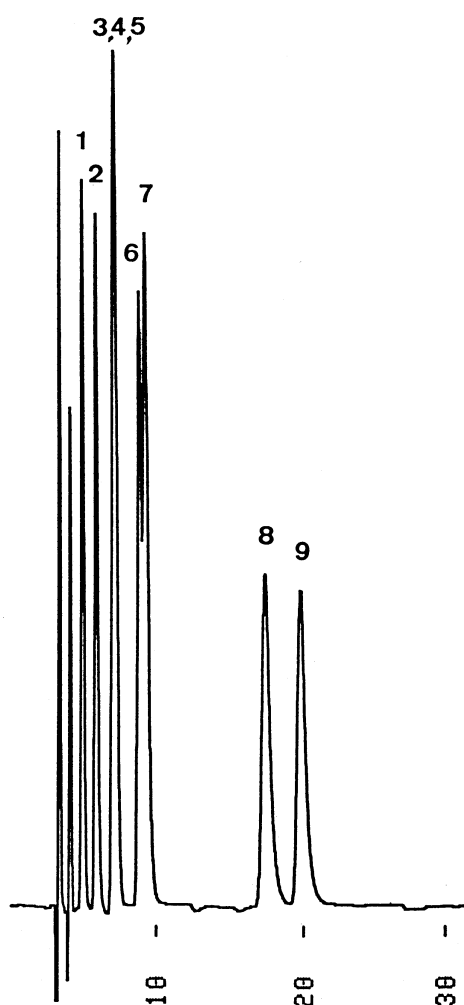


糖アルコール
Sugar alcohols

T910718B



1. Glycerol
2. Erythritol
3. Xylitol
4. Ribitol
5. Arabitol
6. Sorbitol
7. Mannitol
8. Maltitol
9. Inositol

Column : YMC-Pack Polyamine II
250 × 4.6 mm I.D.

Eluent : ethanol/ethyl acetate/acetonitrile/water (30/30/25/15)

Flow rate : 1.0 mL/min

Temperature : 30 °C

Detection : RI, 32 × 10⁻⁶ RIU/FS

Injection : 15 μL (1.7~3.3 mg/mL)