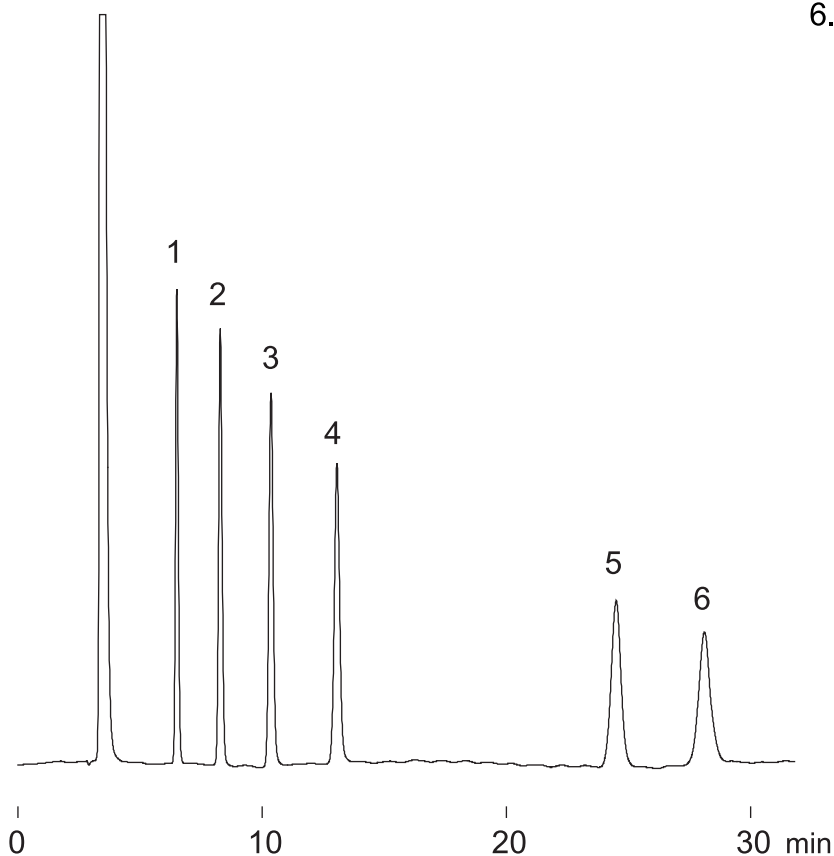


糖アルコール
Sugar alcohols

F030603A

1. Glycerol
2. Erythritol
3. Xylitol
4. Sorbitol
5. Maltitol
6. Lactitol



Column : YMC-Pack Polyamine II
250 × 4.6 mm I.D.
Eluent : acetonitrile/water (75/25)
Flow rate : 1.0 mL/min
Temperature : 25°C
Detection : RI, 32×10^{-6} RIU/FS
Injection : 5 μ L (5.0 mg/mL)