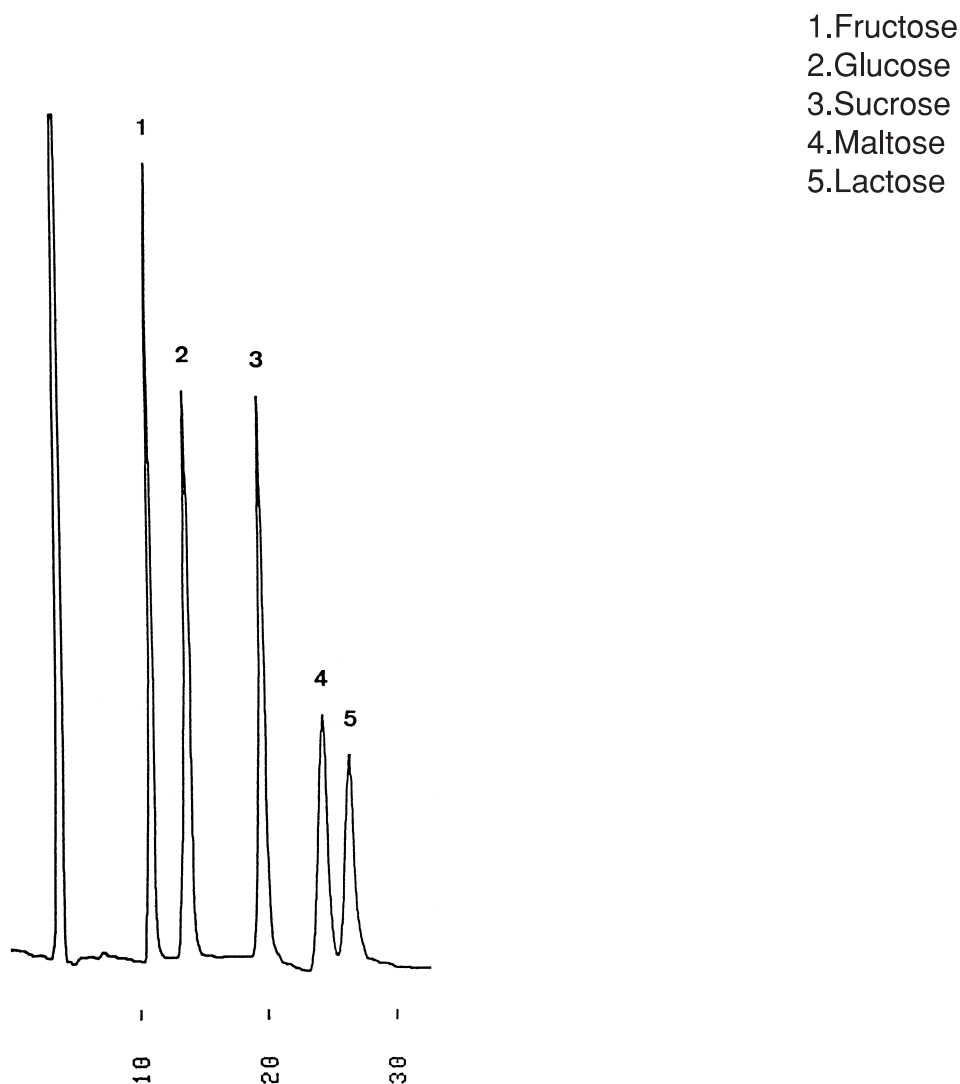


単糖及び二糖類

Monosaccharides and disaccharides

T910726A



Column : YMC-Pack Polyamine II
250 × 4.6 mm I.D.
Eluent : acetonitrile/water (75/25)
Flow rate : 1.0 mL/min
Temperature : 26 °C
Detection : RI, 32 × 10⁻⁶ RIU/FS
Injection : 5 μL (14.3~28.6 mg/mL)