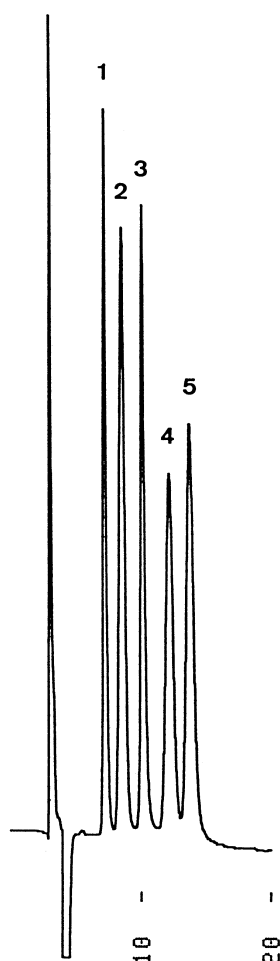


単糖及び二糖類

Monosaccharides and disaccharides

T910723A

- 1. Fructose
- 2. Glucose
- 3. Sucrose
- 4. Maltose
- 5. Lactose



Column : YMC-Pack Polyamine II
250 × 4.6 mm I.D.

Eluent : ethanol/ethyl acetate/acetonitrile/water (30/40/5/25)

Flow rate : 1.0 mL/min

Temperature : 26 °C

Detection : RI, 32 × 10⁻⁶ RIU/FS

Injection : 5 μL (14.3~28.6 mg/mL)