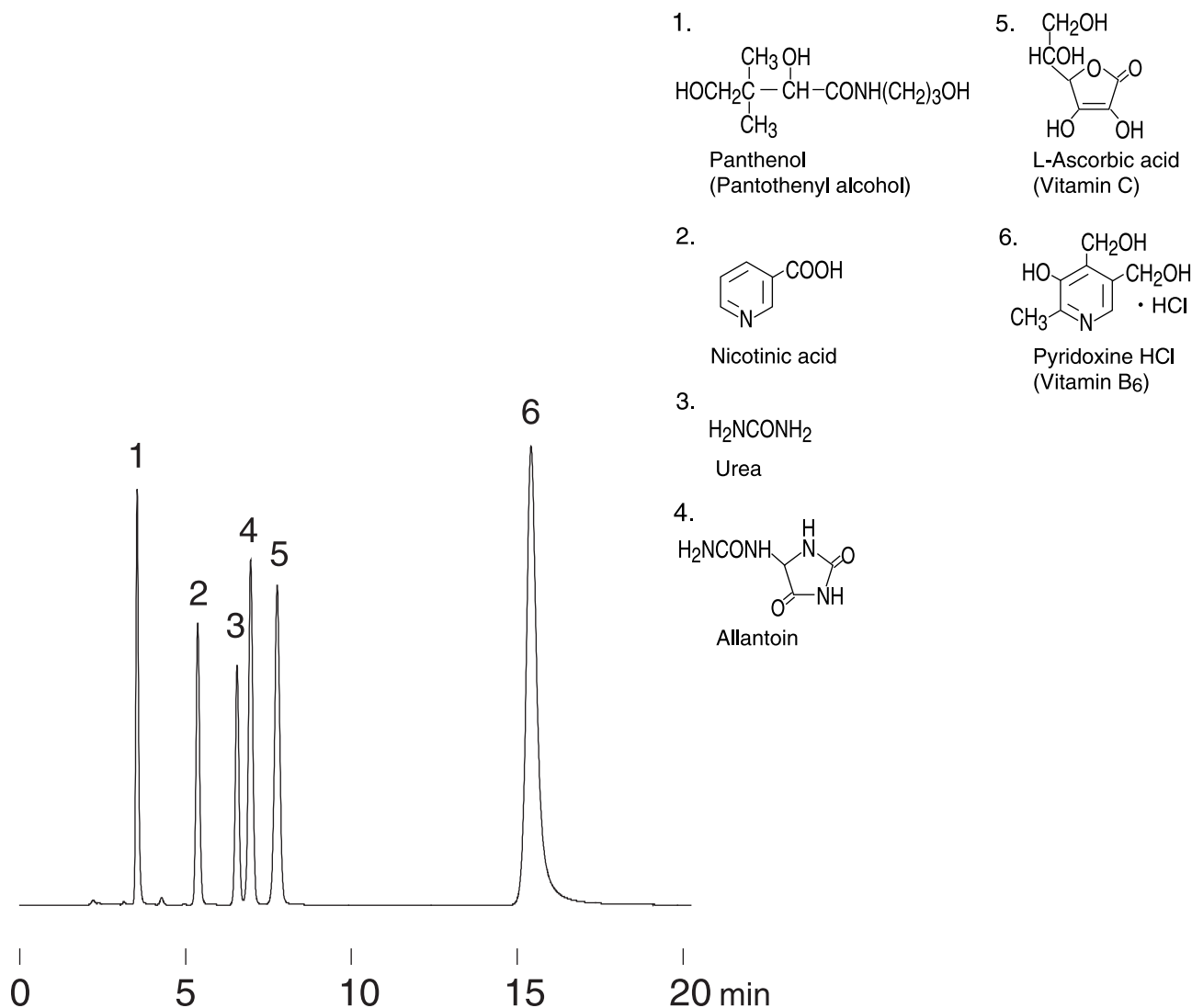


尿素、アラントインおよび水溶性ビタミン
Urea, allantoin and water-soluble vitamins

J030624B



Column : YMC-Pack Polyamine II
250 × 4.6 mm I.D.
Eluent : 50mM NH₄H₂PO₄-H₃PO₄ (pH2.8)/acetonitrile (20/80)
Flow rate : 1.0 mL/min
Temperature : 37 °C
Detection : UV at 210 nm, 0.16 AUFS
Injection : 10 μL (0.01 ~ 5.0 mg/mL)